

**NATIONAL STATUS OF ELEPHANT  
CONSERVATION**

**SOSPETER KIAMBI  
ELEPHANT PROGRAM COORDINATOR  
SPECIES CONSERVATION & MANAGEMENT**

**At:**

**Elephant Conservation and Management Strategy  
(2012-2021) Mid-Term Evaluation Conference  
6 April 2016**



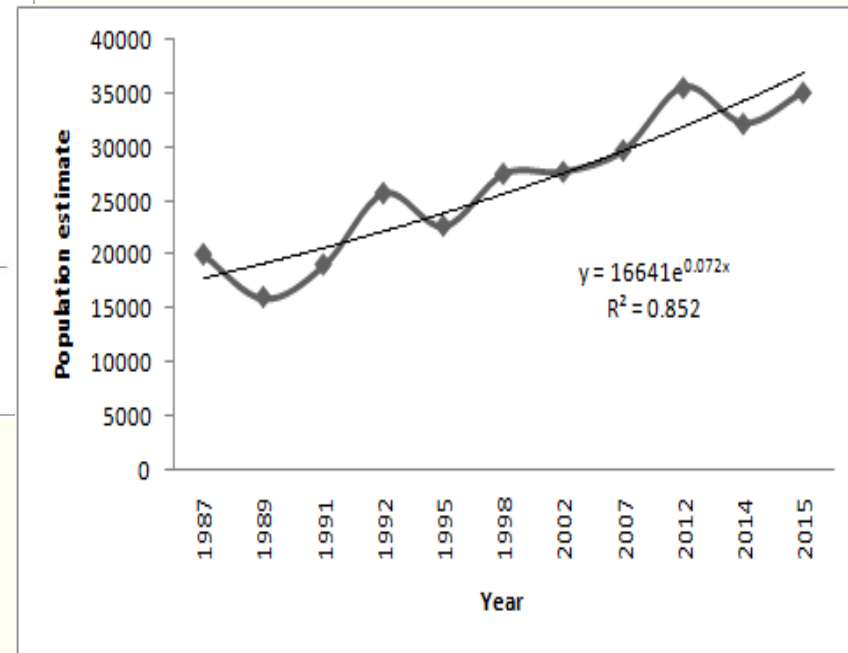
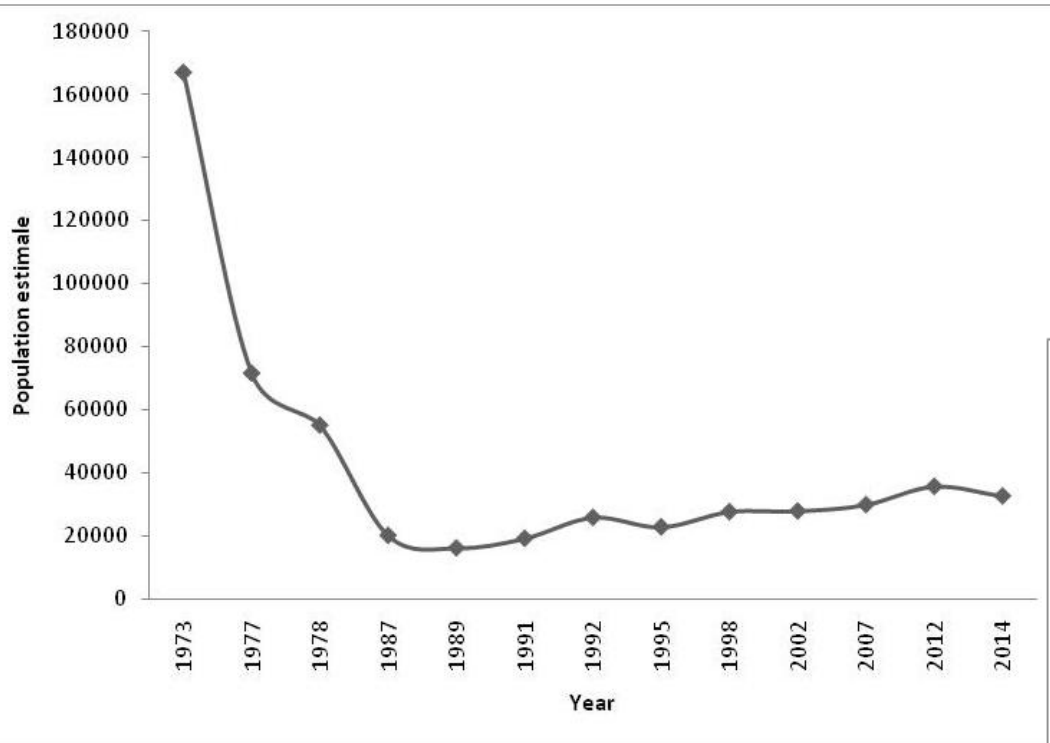
# Trends in elephant population

- Estimates of elephant numbers are used to evaluate trends of population growth or decline, compare population status in different parts of elephant range within countries, regions and across the continent.
- Due to elephant's reproductive biology, elephant population estimates are conducted after every three years.
- Different survey types have been employed for assessment of elephant populations in different habitats over the years.
- Kenyan elephant population has been surveyed through the use of individual elephant registration, aerial total and sample counts, total ground counts and dung density surveys using Fecal Standing Crop (FSC) approach.

# Elephant population status

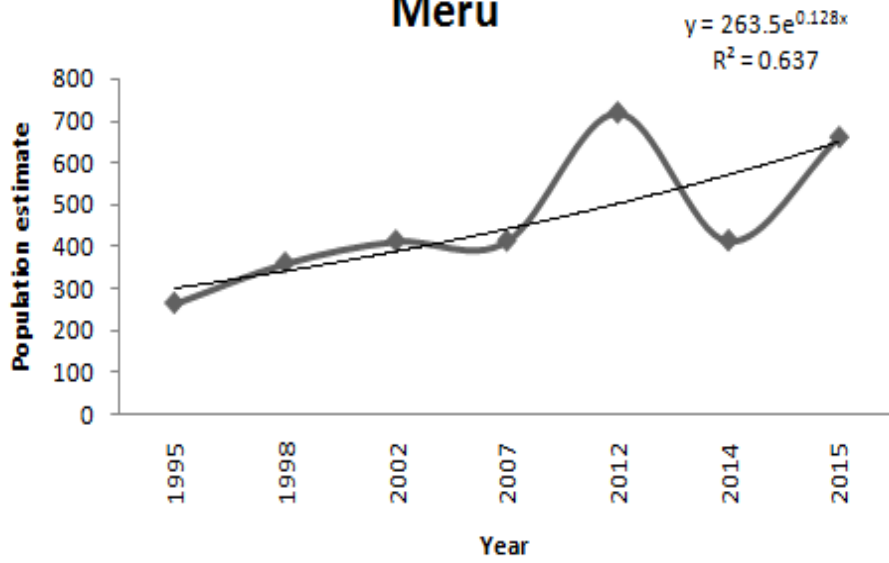
- Estimating and evaluating the quality of the range of elephant populations is central to their conservation
- Existing and emerging anthropogenic factors have led to the decline in habitat quality and fragmentation through loss of connectivity
- In the 70's and 80's, there was a drastic decline of the elephant population from over 160,000 to 16,000 in 1989
- As at December 2015, there was a national elephant population of 35,149 elephants which represents a 2.73% annual increase since 1989

# Kenya elephant population trends

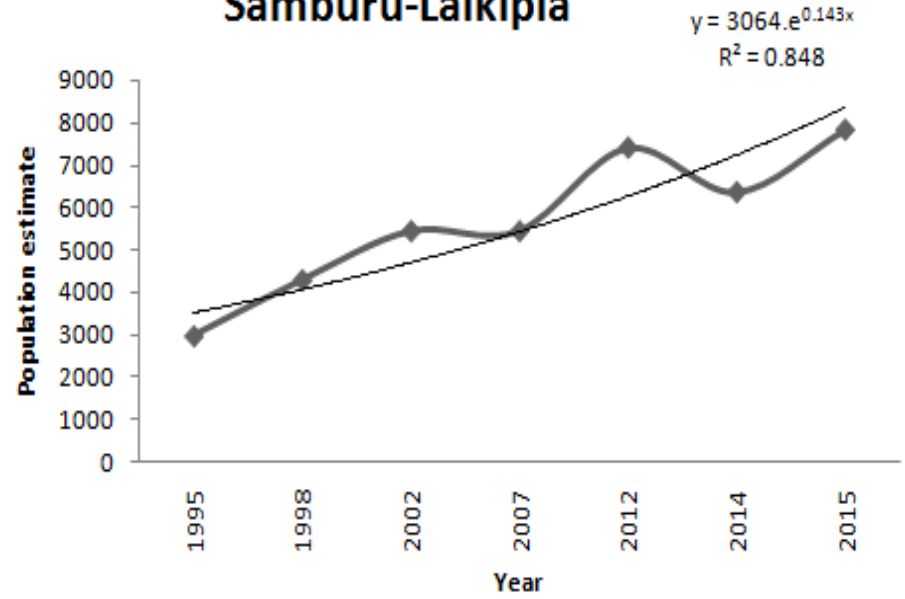


Inconsistency in survey of forest populations

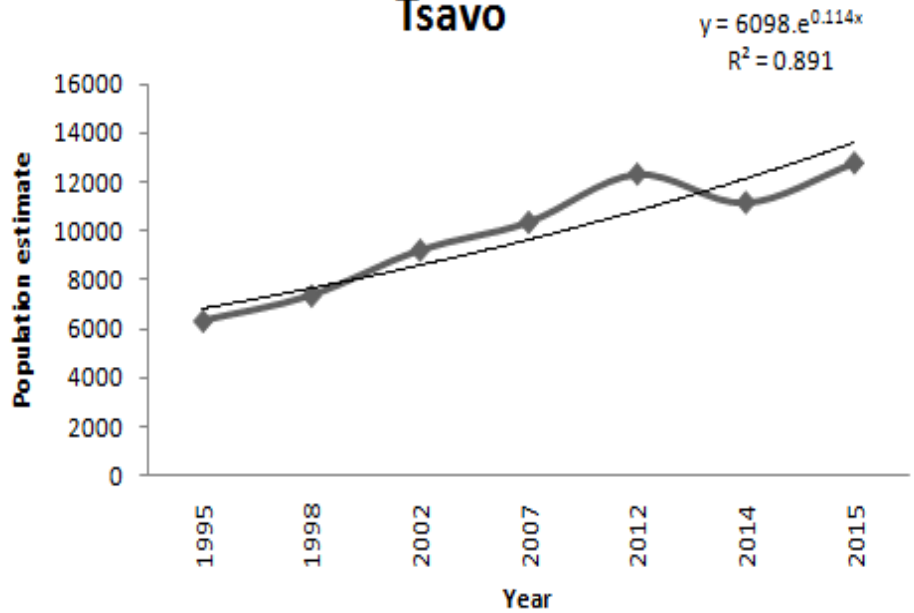
### Meru



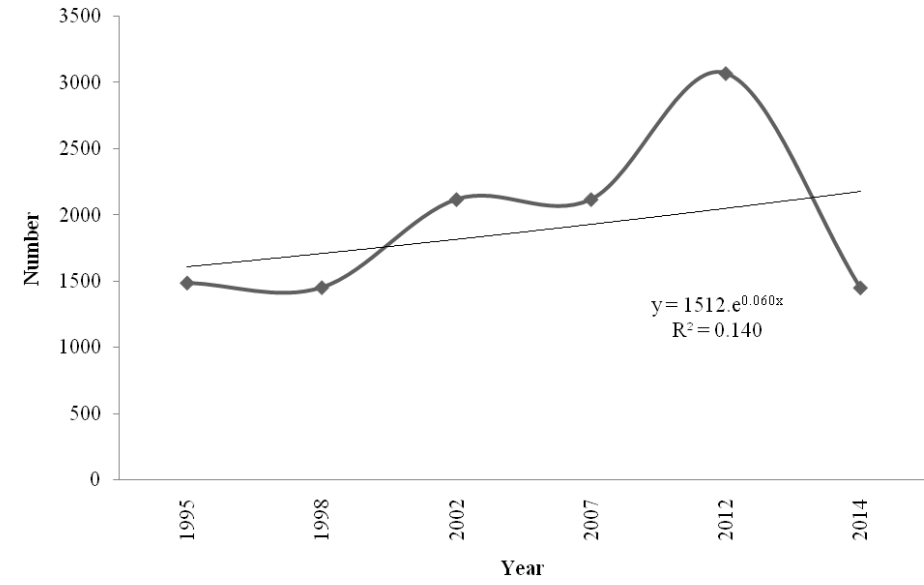
### Samburu-Laikipia



### Tsavo



### Mara



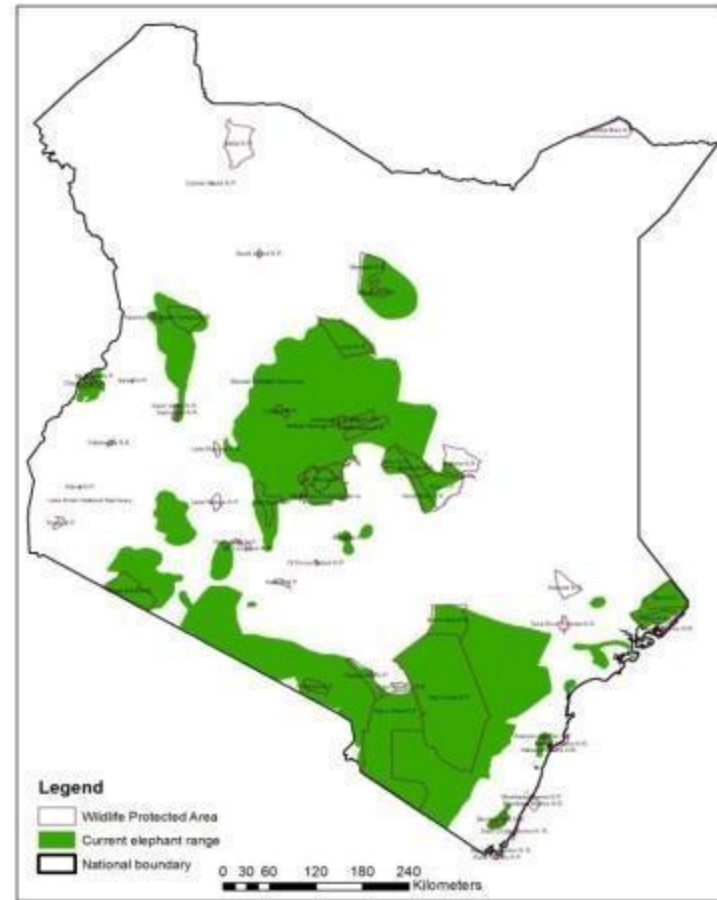
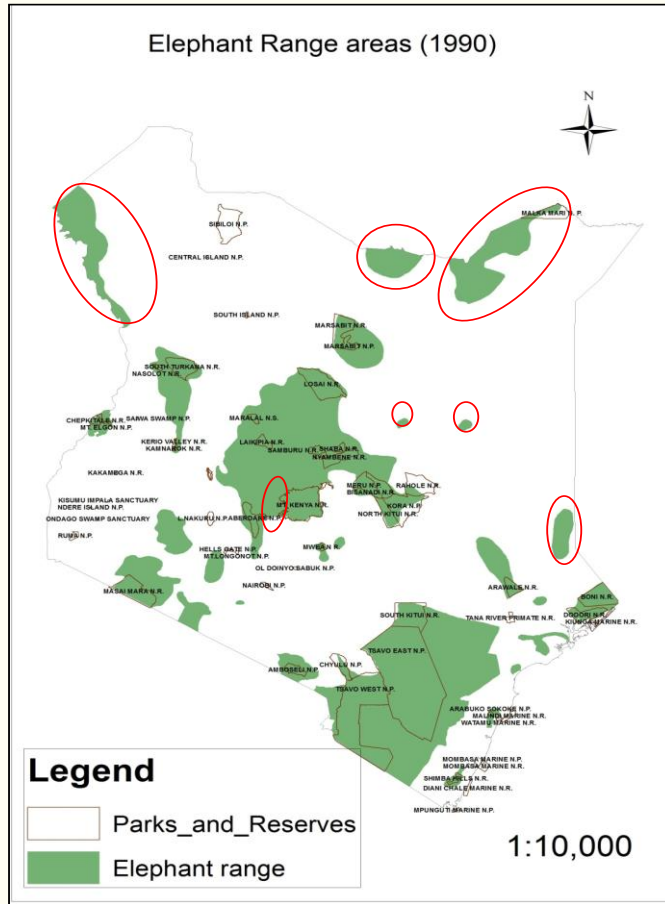
<i>Input Zone</i>	<i>survey type</i>	<i>Year</i>	<i>Population estimate</i>
Amboseli ecosystem	Sample aerial count	2015	1736
Kerio Valley dispersal area	Sample aerial count	2015	311
Lamu District	Aerial total Count	2015	60
Meru National Park	Aerial total Count	2015	659
Mwea National Reserve	Aerial total Count	2015	71
Nasalot S Turkana, Rimoi & Kamnarok National Reserves	Sample aerial count	2015	351
Samburu-Laikipia ecosystem	Sample aerial count	2015	7835
Bisanadi National Reserve	Aerial total Count	2014	0
Chyulu National Park	Sample aerial count	2014	0
Kora National Park	Aerial total Count	2014	0
Marsabit National Park	Dung count	2014	100
Masai Mara Dispersal	Aerial total Count	2014	552
Masai Mara National Reserve	Aerial total Count	2014	876
Meru Dispersal	Aerial total Count	2014	2
Narok North	Aerial total Count	2014	20
Tsavov Dispersal	Sample aerial count	2014	1649
Tsavov National Park	Sample aerial count	2014	11119
Magadi Ecosystem	Aerial total Count	2013	30
Shimba hills ecosystem	Aerial total Count	2012	274
South Kitui National Reserve	Aerial total Count	2011	0
Mt Kenya National Park & forest Reserve	Dung count	2010	3755
Mwingi National Reserve	Aerial total Count	2007	0
Rahole National Reserve	Aerial total Count	2007	27
Transmara forests	Dung count	2007	513
Aberdare Dispersal	Informed guess	2005	1700
Aberdare National Park	Informed guess	2005	1840
Kipipiri Forest Reserve	Informed guess	2005	13
Tana River Primate National Reserve	Other Guess	2005	30
Arabuko Sokoke Forest	Dung count	2002	184
Mt Elgon National Park & forest	Informed guess	2002	139
North Kitui National Reserve	Aerial total Count	2002	0
Tana River Delta	Informed guess	2002	20
Boni & Dodori National Reserves	Dung count	2000	50
Loroki Forest	Dung count	1997	210
Mau Forest Complex	Dung count	1995	1003

32 elephant population input zones

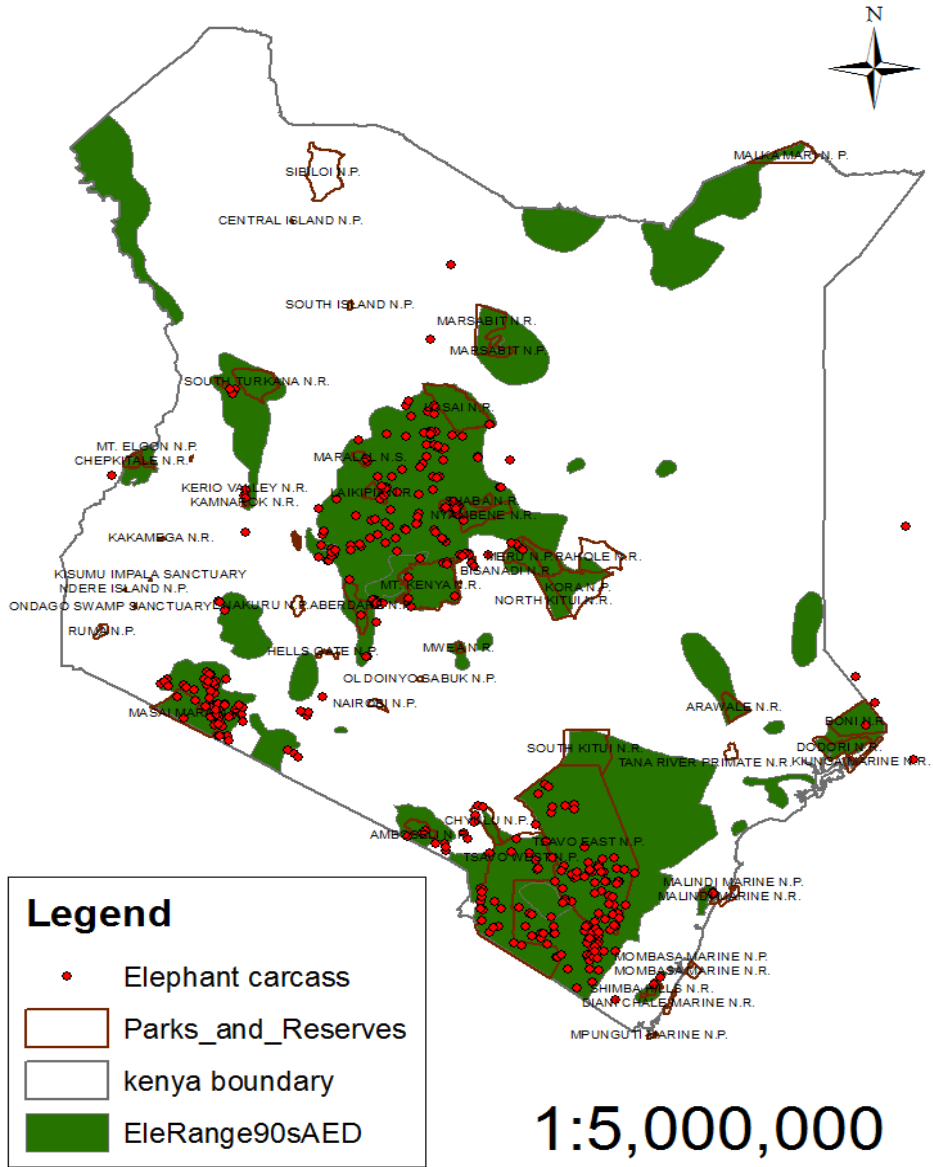
62.5% of populations not updated for over 5 years



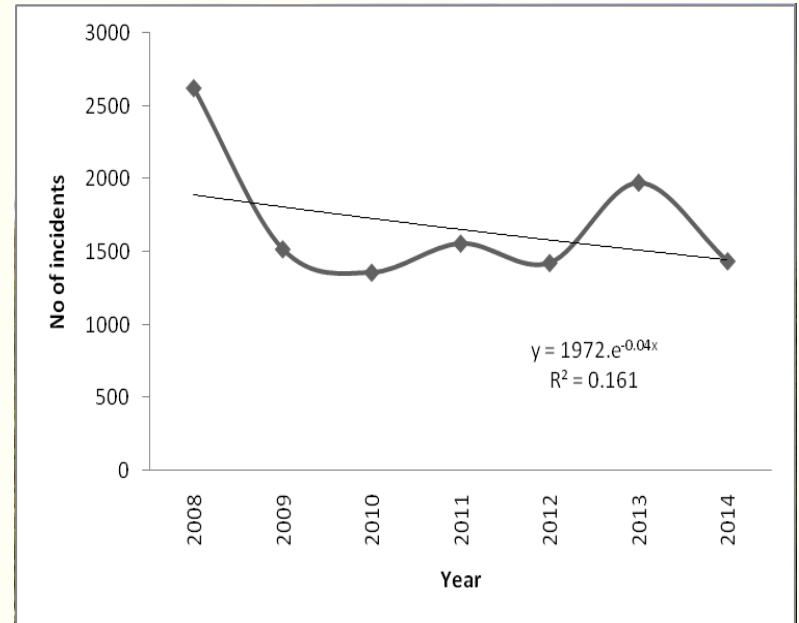
# Changes in elephant range areas between the years 1990 and 2015



# Elephant Mortality-2014

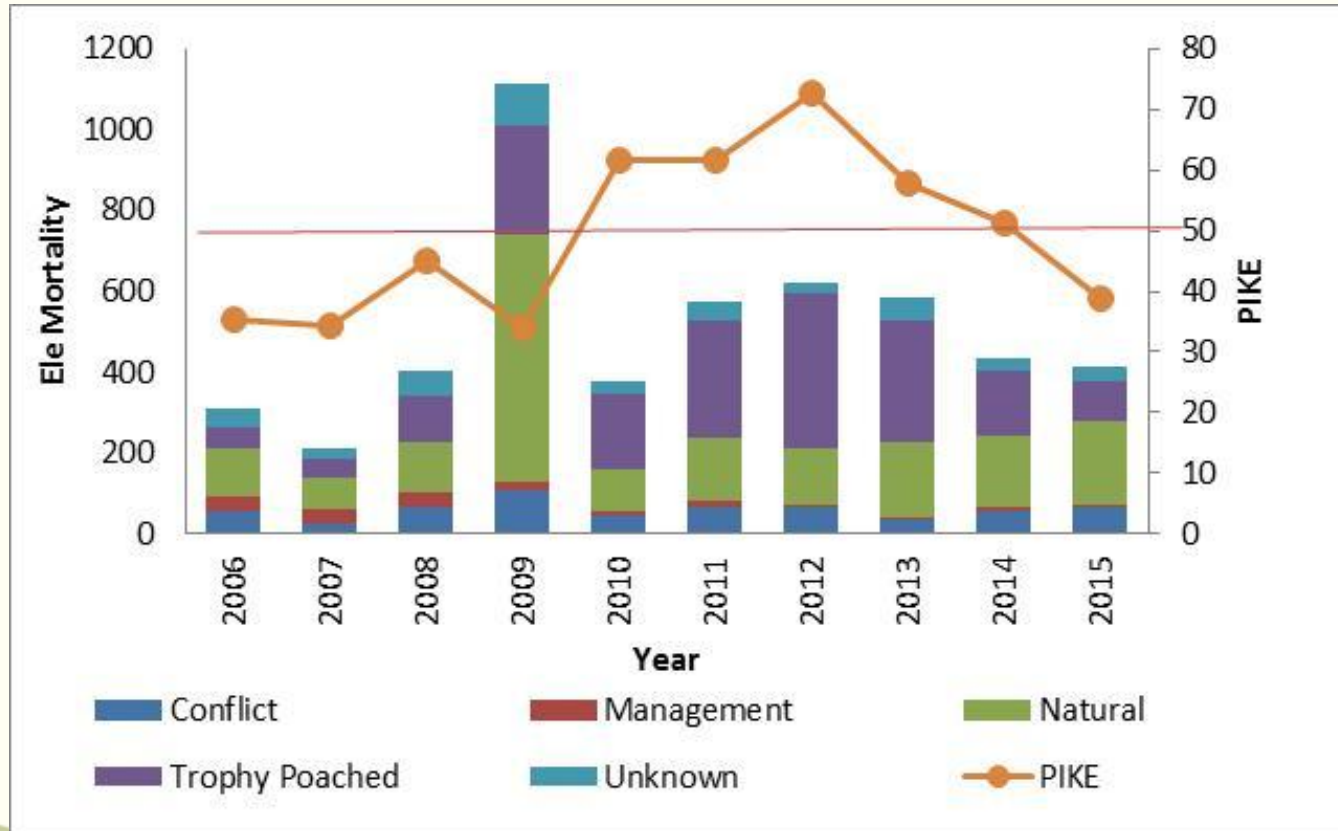


# Elephant Mortality





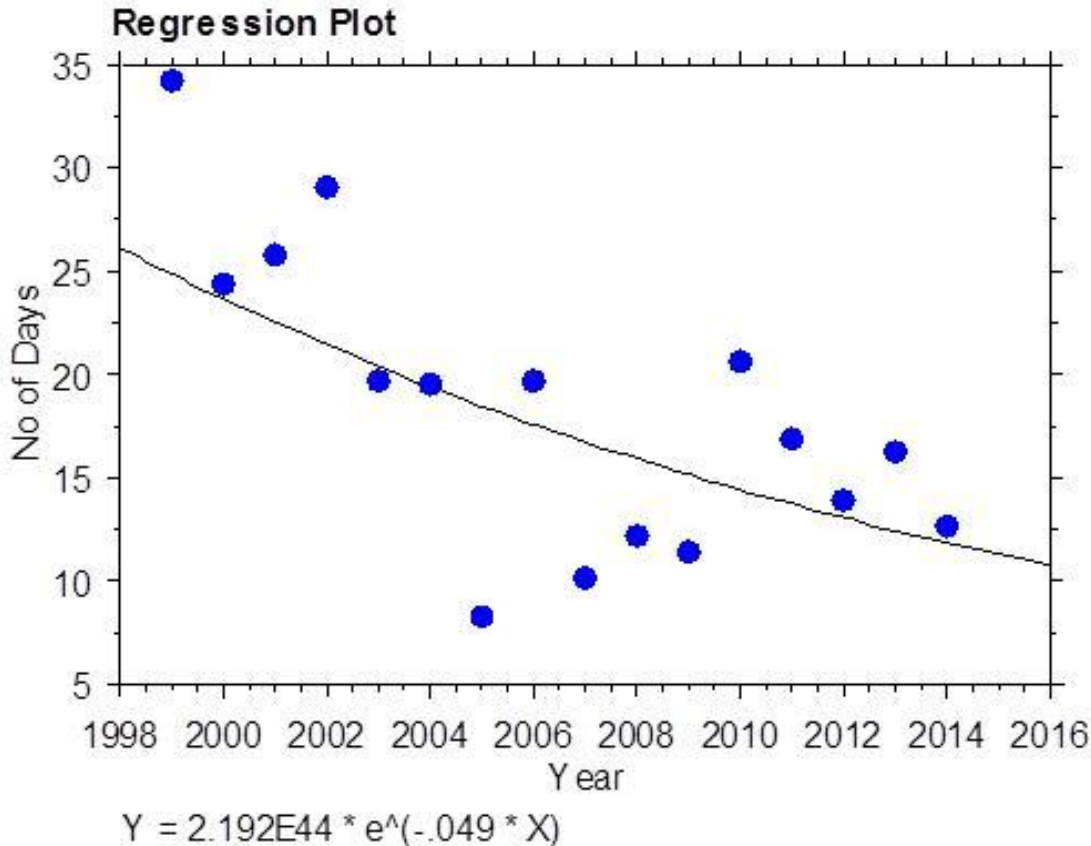
# Monitoring of Illegal Killing of Elephants (MIKE)



-Tsavo ( $0.43 \pm 0.17$  (n=1322 cases) ) & - Mountain ( $0.45 \pm 0.13$  (n=1896 cases)) conservation areas low on PIKE

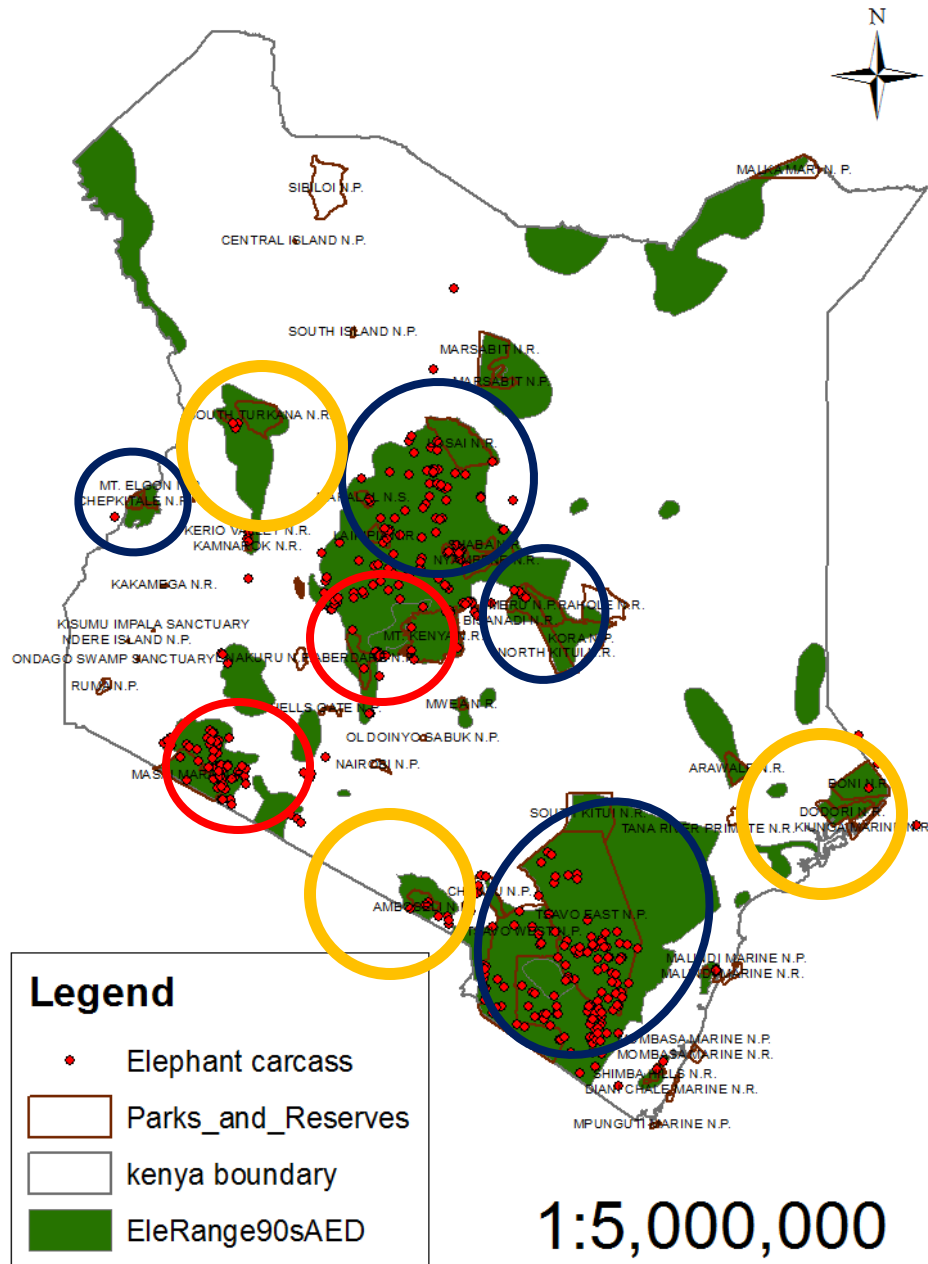
Western ( $0.69 \pm 0.14$  (n=94 cases) ) and Central rift ( $0.67 \pm 0.14$  (n=489 cases) ) conservation areas had the highest PIKE

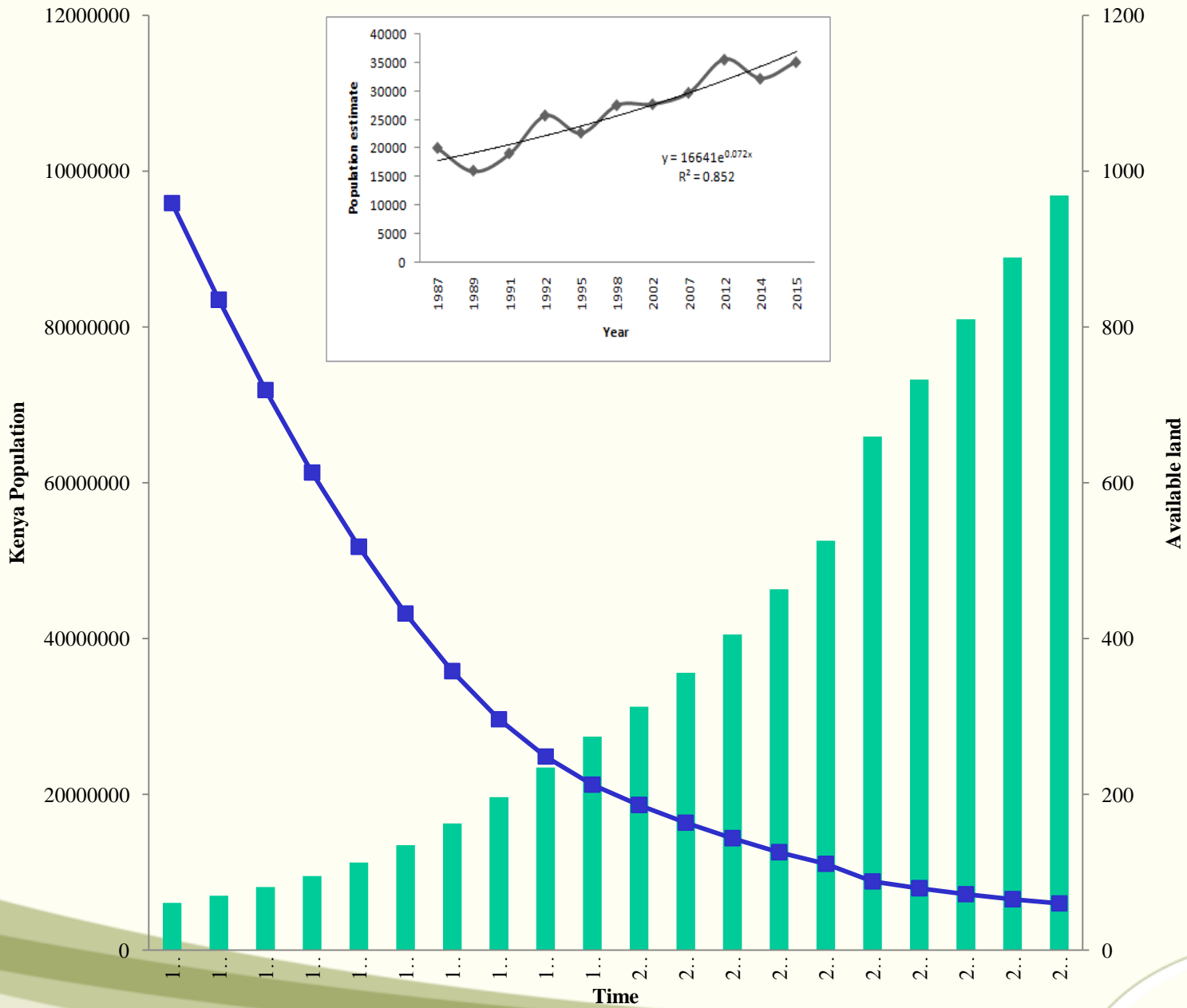
# Efforts to combat poaching



- Enhanced security
- Standardized Monitoring
- HEC intervention
- Legislation
- Technology
- Cross border collaboration

# Elephant Mortality-2014





# THANK YOU

